

Job Name: _____

Location: _____

Purchaser: _____

Engineer: _____

Submitted To: _____

For: Reference Approval Construction

Submitted By: _____

Date: _____

Unit Designation: _____

Cooling Performance:

Nominal Capacity	28,600 Btu/h
Nominal Sensible Capacity	22,400 Btu/h
EWT Range	40-50°F (5-10°C)
Nominal Flow Rate	6.0 GPM
Nominal Pressure drop	4.8 Ft/Hd

Heating Performance:

Nominal Capacity	31,900 Btu/h
EWT Range	100-125°F (38-52°C)
Nominal Flow Rate	4.5 GPM
Nominal Pressure drop	3.0 Ft/Hd

Notes:

- Cooling Capacity is based on 50°F Entering Water Temp and 80°F DB/67°F WB Entering Air Conditions.
- Heating Capacity is based on 110°F Entering Water Temp and 70°F DB Entering Air Conditions.
- Refer to detailed capacity tables for further information pertaining to the entire entering water temperature range and for flow rates and pressure drop.

Airflow Rate:

Nominal CFM	1,050 CFM
Total External Static Pressure	Std: 0.3" WG / Max: 0.5" WG
Blower Speed setting	"B" FIELD SETTING
Motor rating	1/2 HP

Airflow arrangement

Up-flow, Horz. Left, Horz. Right (Possible)

Electrical Data:

Power supply	208-230V / 1PH / 60Hz
Min. Circuit Amps (MCA)	4 AMP
Max. overcurrent protection (MOP)	15 AMP
Electrical Heater Options	<input type="checkbox"/> 5kW <input type="checkbox"/> 10kW <input type="checkbox"/> 15kW

Electrical Heat Integral Disconnect:

- Electrical Data for Fan Motor only.
- Factory installed service switch over 10kW (No disconnect).
- See Guide specifications for electrical data for units with factory mounted electric heat.

Physical Data:

Dimension (H x W x D)	42"x23"x20"
Weight	170 lbs
insulation type / R-Rating	1/2"JM TUF-SKIN

Installation Clearances: U.L. Listed for installation with Zero inches Clearance to Combustible materials

Connection type

Inlet / Outlet Connections	3/4"(Nominal)
Connection Type	Sweat
Drain Connections	3/4"(M) NPT

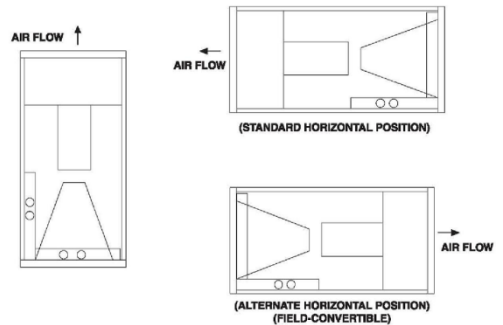
Feature:

Air Filter (MERV 8 Throwaway)	20"x22"x1"
-------------------------------	------------

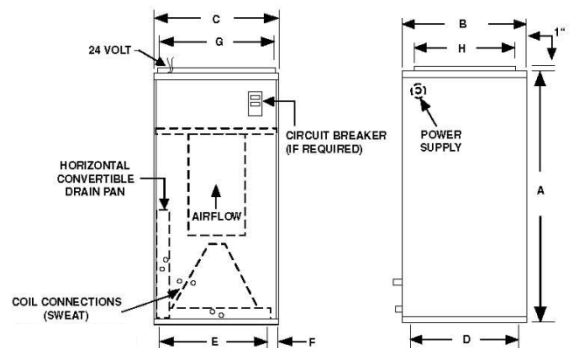


Airflow arrangement

3-WAY AIRFLOW



Physical Dimensions



A	B	C	D	E	F	G	H	FILTER SIZE
42	23	20	21-1/2	16	2	18	17	20x22x1